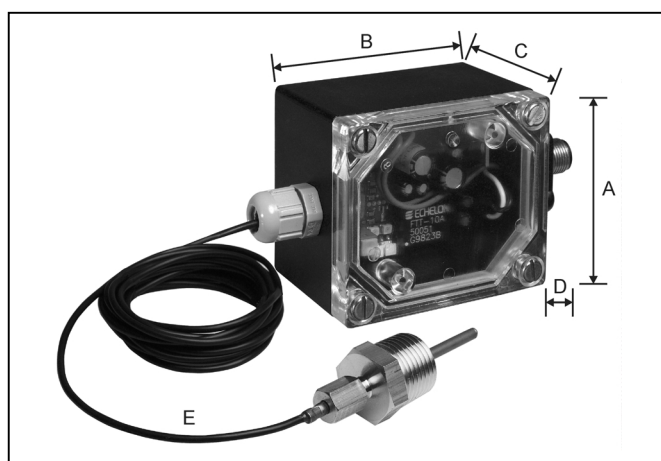


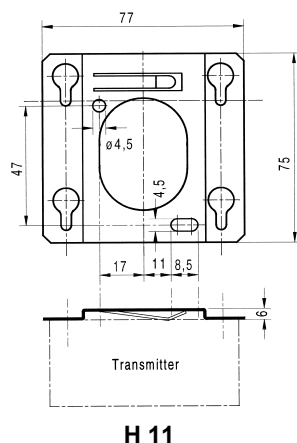
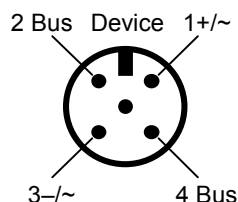
LON Temperature Sensor Fast Temperature Sensor T7425A1005-L / T7425A1013-L

Technical Data



	A	B	C	D	E
mm	61	72	51	25	2500

Connection diagram



IP 65

Features

- LONMark[®] temperature profile #1040
- Uses Echelon LONTalk[®] protocol
- Factory-configured default parameters
- LON service and operation LED visible without disassembly
- Protection class IP 65
- Easy plug connection
- Uses FTT 10A Transceiver
- Barcode with Neuron ID outside
- NTC 20 linearization

Technical Data

Cable entry:	Plug connection M 12 four-pole (a four- or five-pole plug may be used)
Operating voltage:	24 V AC \pm 20 % or 24 V...36 V DC
Materials:	Sensor housing: Macrolon Sensor: 1.4571 Clamp bushing G 1/2: brass
Cable length:	2.5 m
Max. perm. pressure:	16 bar
Protection class:	IP 65
Installation sensor:	With clamp bushing G 1/2 direct in the pipeline
Installation housing:	Are fitted directly on the wall with H 11 bracket
Linearity:	Range 0... +75 °C \pm 0.8 K -20... +100 °C \pm 1.5 K -30... +110 °C \pm 2.0 K
Working range:	-20...+110 °C
Measuring element:	NTC 20
Immersion depth:	T7425A1005-L 75 mm T7425A1013-L 300 mm
Sensor \varnothing:	4 mm
Transceiver and profile:	FTT 10A Profile 1040#
Ambient temperature:	0...+50 °C
Accessories included in delivery:	Plug M 12 five-pole Mounting bracket H 11